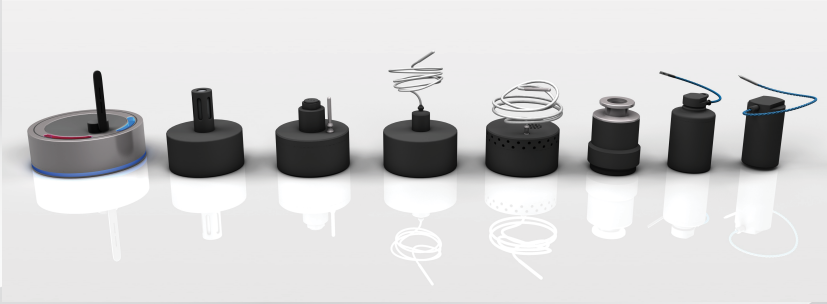




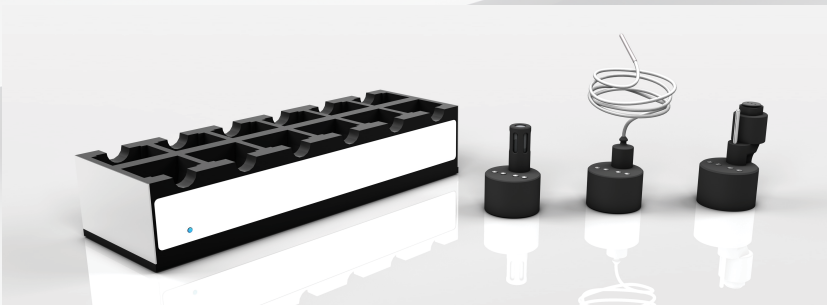
## Validation/Mapping measurement system category list

### Real-time wireless data logger XpertLog<sup>®</sup> GMP RF



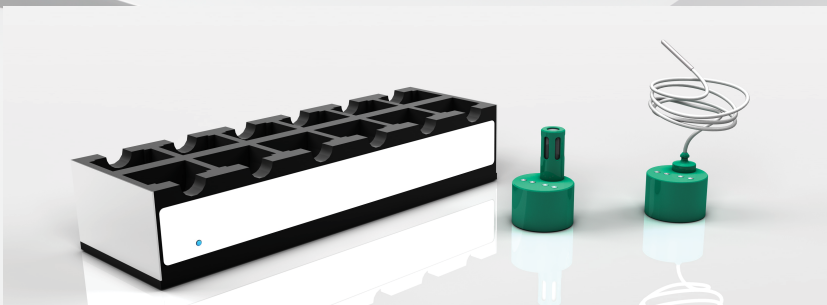
- Real-time data logger with excellent wireless communication features (up to 121 m) that allows remote setting and display of data during measurement
- Data is transmitted real time from the inside of the Autoclaves and Freeze Dryers to the laptop
- Operating temperature range: -90°C to +140°C
- Parameters: temperature/humidity/pressure/CO<sub>2</sub>/Vacuum

### Standard wireless data logger XpertLog<sup>®</sup> GMP



- Standard data loggers dedicated to all Pharma applications between -90°C to +140°C
- Logger body operating temperature range: -90°C to +140°C
- Logger sensor operating temperature range: -200°C to +200°C
- Parameters: temperature/humidity/pressure
- Small, light, easy to use

### Standard wireless data logger XpertLog<sup>®</sup> GDP



- Standard data loggers dedicated to GDP applications
- Temperature measurement range: -40°C to +85°C
- Parameters: temperature/humidity
- Small, light, easy to use

### 64 Channel Data Acquisition System XpertVal64



- Thermocouple based system dedicated to all applications in Pharma & Biotech
- 64 Channels
- Can read thermocouples, PT100, Pressure, CO<sub>2</sub>, 4-20 mA, 0-10V
- Large touch screen 10.1"
- Acquisition interval 1 sec for 64 channels simultaneously
- User friendly interface

# Validation/Mapping measurement system category list

## Smart Connectors - XSens



- Robust design, click into sockets - prevents accidental sensor disconnection
- Each TC has a Unique ID - individually traceable
- Coefficients stored in each connector
- Compatible with XpertVal64 and XpertMon

## Dedicated Software XpertLog®



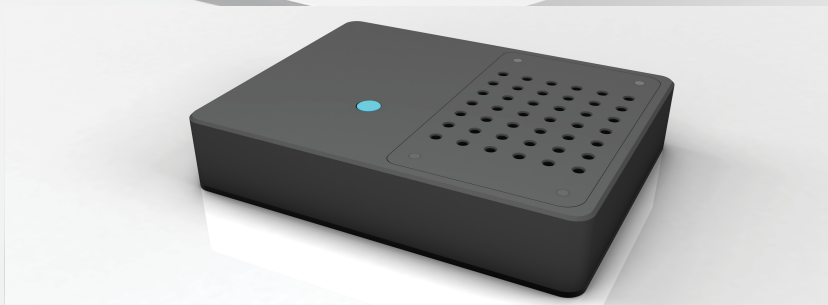
- Dedicated validation/mapping software developed specifically for the pharmaceutical and biotech industries
- FDA CFR 21 Part 11 compliant
- XpertLog® Software can control all Lives Systems
- Active directory integrated

## Secondary Reference Probe XpertRTD+



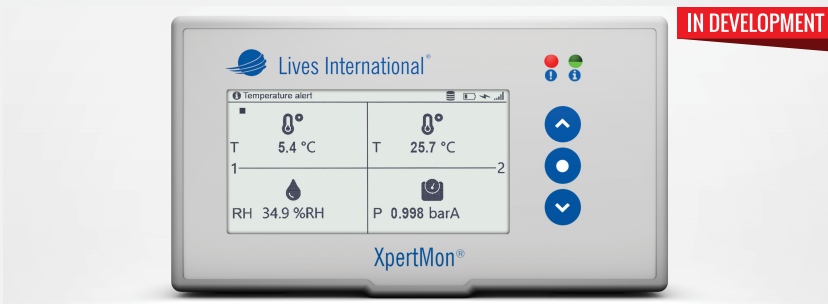
- Display interface between reference thermometer and Lives International System
- Display unit selectable: °C, °F, °K, Ω
- USB / Wireless signal transfer to XpertLog® System
- Can connect a Smart Probe to the display

## GPS Tracking Device XperTrack



- Web based control of your cold chain shipments
- Collects and stores temperature, position, light exposure and shocks data in the internal memory
- Alarms are triggered when your products exceed the allowed temperature, light exposure and shocks during shipment

## Continuous Monitoring System XpertMon



- Unlimited number of sensors
- Historical data is stored in the cloud / locally
- Alarms sent by message / event to dedicated users
- Automatic report generation on request for the user defined interval
- Secured authentication prevents unauthorized access to the system
- Multiple access levels